

# LSP-450 PE Pipe line

Photo reference

**LSP- 450PE Solid Pipe Production Line**

Available pipe size:  $\Phi 110$  —  $\Phi 450$ mm

By susie zhang

Tel: +86-757-23888336

Fax: +86-757-23888558

Email: [susie@liansu.com](mailto:susie@liansu.com)

*Liansu*  
*Liansu*





# LIANSU

# LSS100-34 Single Screw Extruder

**Extruder capacity: 750kg/h (without pressure)**

**5 heating zones with 5 cooling fan**

**Professional design of screw, barrel and feed bush**



**Main driving motor : 200kw DC motor**

**Auto feeding unit(with dryer): supplier: Taiwan Shini**

**Electric heating power :6 kw**



Saveomat IGS.M1 Gravity monitoring system, it is directly **imported from Germany**, the purpose is for better control of thickness of pipes and stable feeding of materials through changing the screw rotate speed and hauling speed.





Type:30-25

Maximum output:1.5kg/h

Weight :200kg

Material of screw:

38CrMoAlA

Treatment: **Nitriding**

processing, depth0.5~0.7mm  
polishing

Motor :1.1kw

**Inverter: Danfoss**

With stainless steel hopper

For the computer control system for all of our extruders, Liansu uses **Simens HMC-II 300 series**, with **10 inch key screen**.



There are many series in Simens HMC-II product. Liansu is using the latest upscale series. Other Chinese competitor usually use 200 series with smaller screen, which the cost is half but with slower speed and less memory and less function.





Combination of electrical cabinet : tidy ,clean ,stable and convenience for operation

Inverter of main motor : by ABB-DCS401

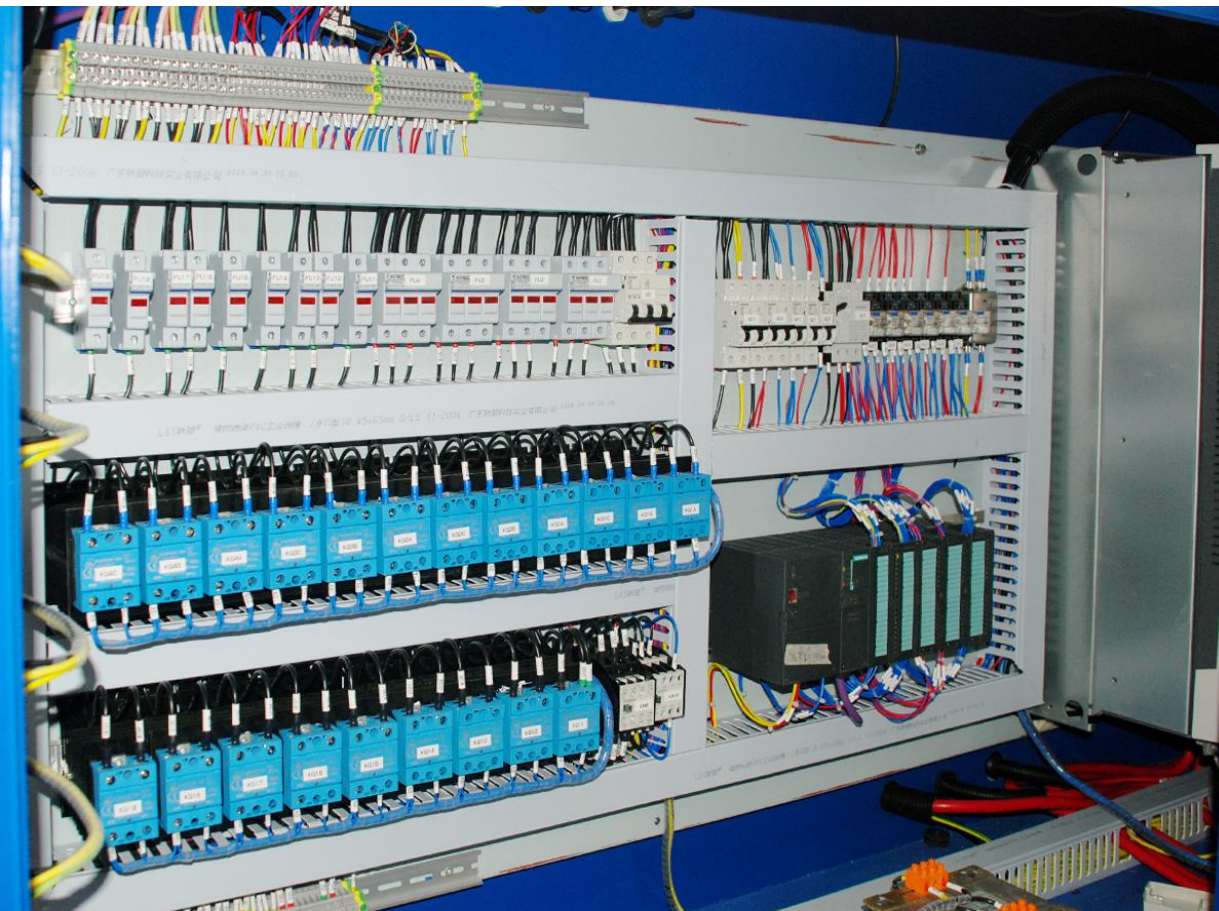
Thermo regulating meter: OMRON

Contactors: Siemens

Breaker: Siemens

Solid state relay: CELDUC ,France

Other Chinese competitors usually use cheaper electric components and different structures to save cost.

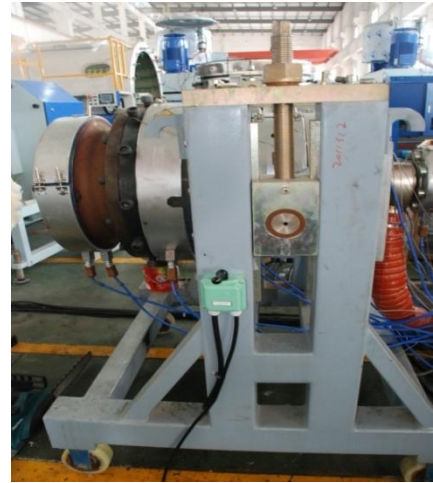


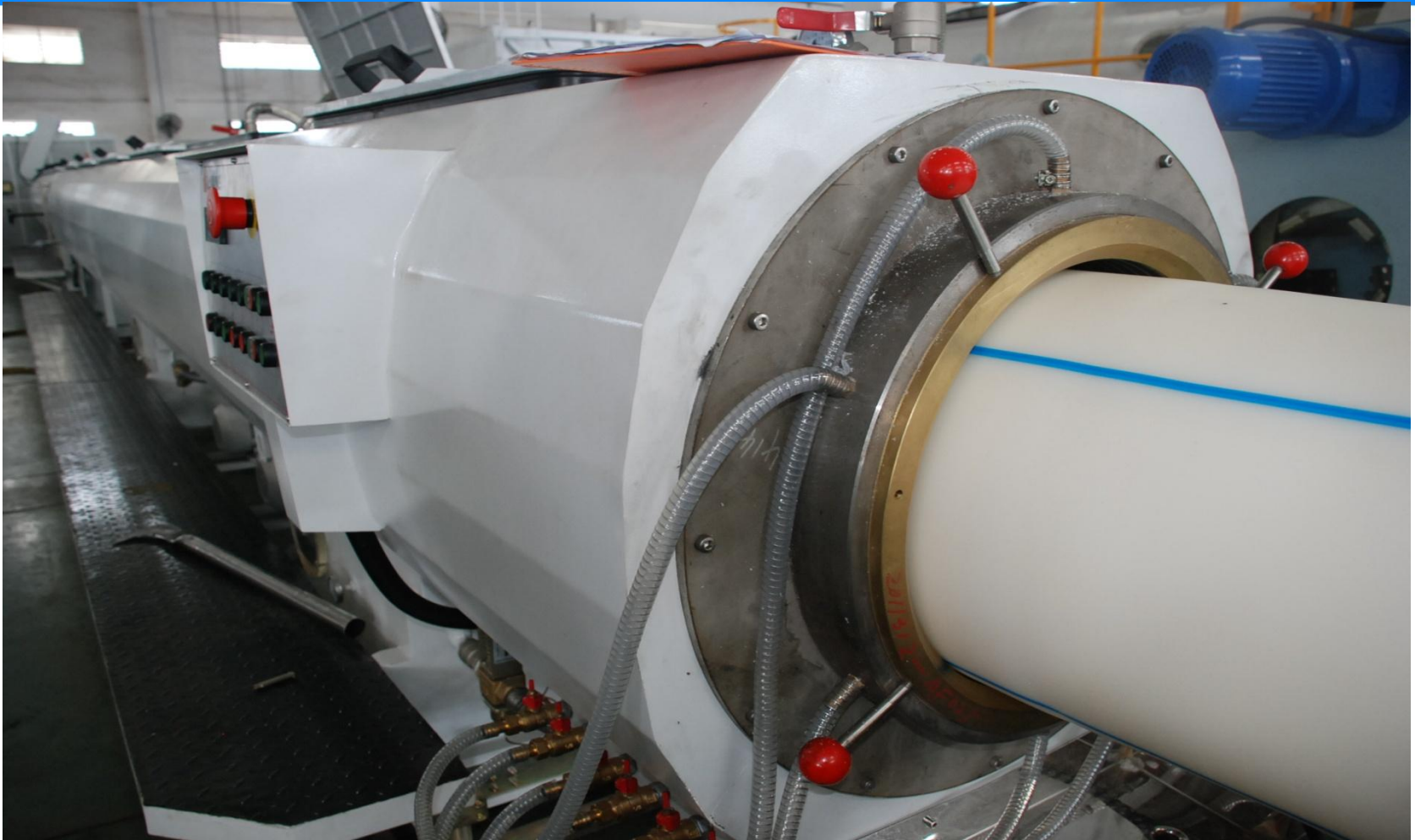


# Extrusion die



This set of mould has spiral flow channel which ensures an even melt temperature, eliminates melting marks, and overcomes the stripe defect. Mould adopted core thermostat system, greatly reduced blistering, black spots, cracks and other phenomenon which was caused by inner temperature is too high or too low. **W air exhaust device. Fan power 2.2kw .**

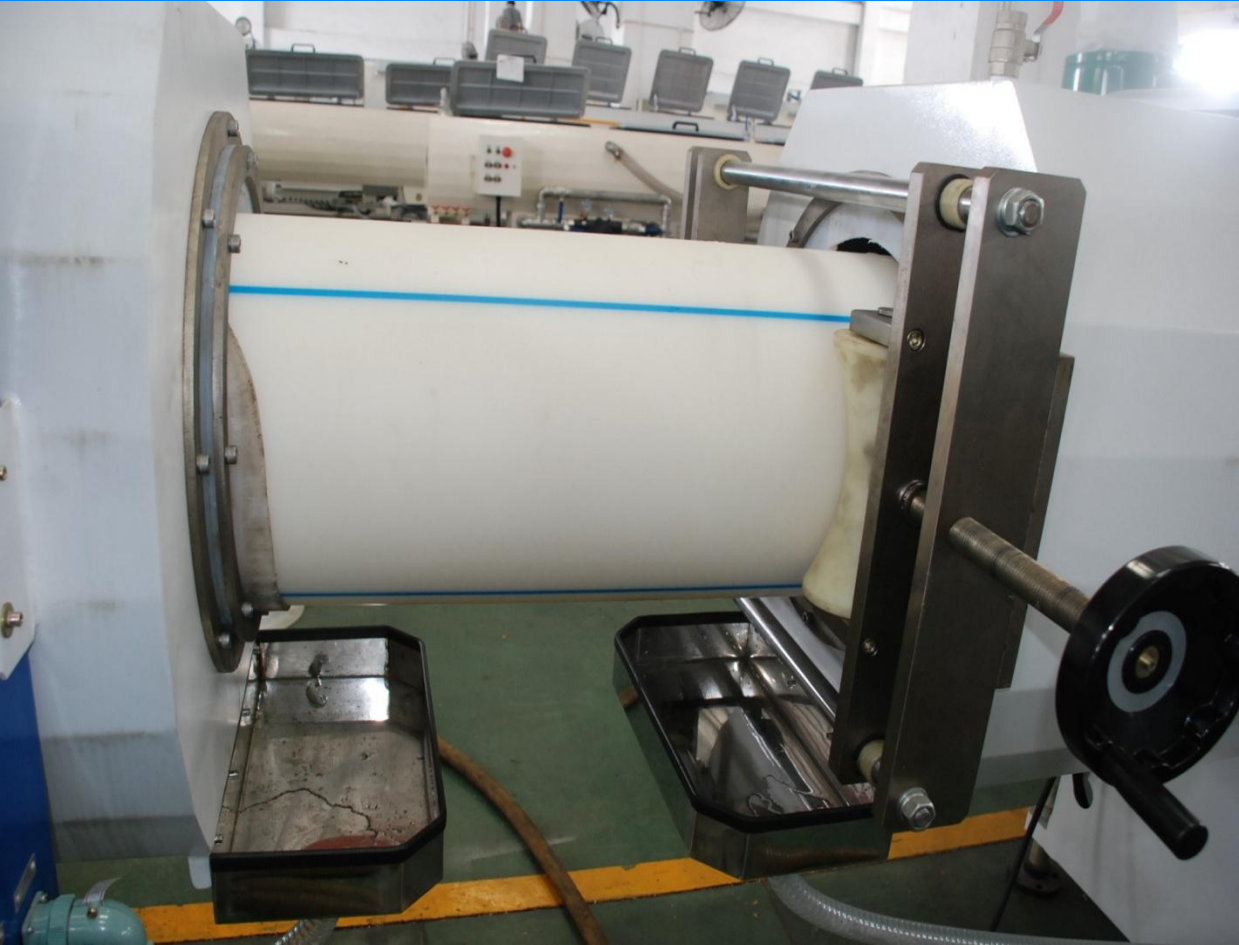




USE **brass calibrators** , length of vacuum tank :**9M**, thickness:**4mm**, material: stainless steel 304 Spray nozzle quantity:680pcs, Circle collocation of spray nozzle:12pcs vacuum pump power water pump power: 5.5kW×1; 7.5kW×1 weight:4000kg



Fore & back movable distance:1200mm  
Water level controlled by floating ball switch;  
Water temperature: controlled by thermo regulating  
drainage valve With reliable PE filter



Other factories usually use PVC sheet which is easily broken ←

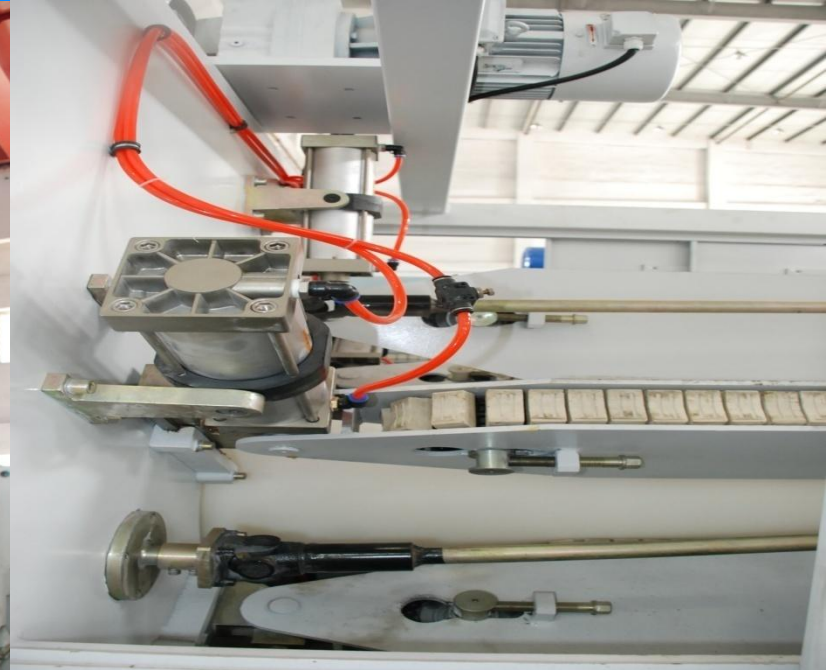
Reliable device for pipe roundness

Spray nozzle quantity:340pcs, tank thickness 3mm,water pump 7.5kw\*1



# LIANSU

## LSPQ6-450B Six-caterpillar haul-off unit



Six caterpillar , **independent inverter motor  $0.55\text{kW} \times 6$**  , DANFOSS inverter , pipe diameter range  $\Phi 110 \sim \Phi 450\text{mm}$  ,hauling speed  $0.15 \sim 2.4\text{m/min}$  Number of rubber block:650 pcs body dimension:  $2800 \times 2000 \times 1750$  weight :3500kg



# LIANSU

## LSWQ-450 Swarfless Cutting Unit



**Type:** Gear transmission、 knife in and out by screw rod、 rotating cutting

**Clamping mode:** 6 connecting rods auto clamping

**Moving :**Driven by screw rod

**Moving method of work table:** Cylinder following

**Dimension:**5650(length) × 1750(width) × 1950(height)mm



Type	Pneumatic discharge
Pressure of air compressor	0.4~0.6Mpa
Current of compressed air	6 l/min
Pilling length	≤6000mm



Other factories use simple and cheaper design which is not so reliable





For more specific detail of the machine, please refer to the machine specification.

## Look forward to a Win-win business

