

LSEB-1500PE / PP Panel Production Line Production Line

Width of panel : 1500mm

Maximum panel thickness: 20mm

Production speed: 0.1-0.5m/min

By susie zhang. 2012 August

susie@liansu.com

Mobile :0086-13929129682



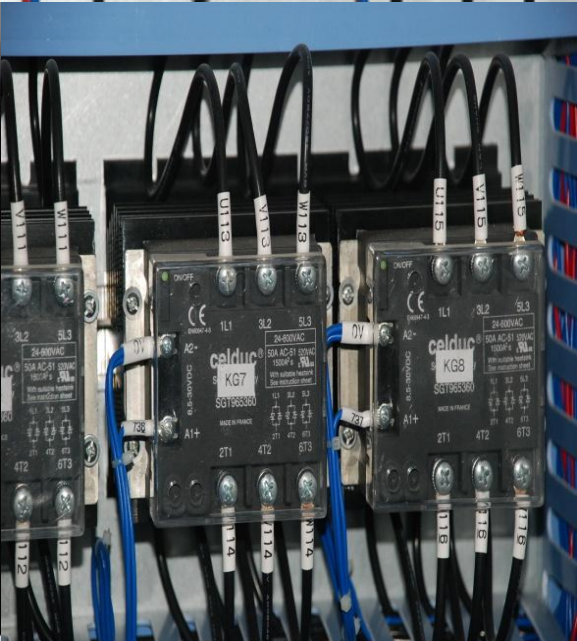
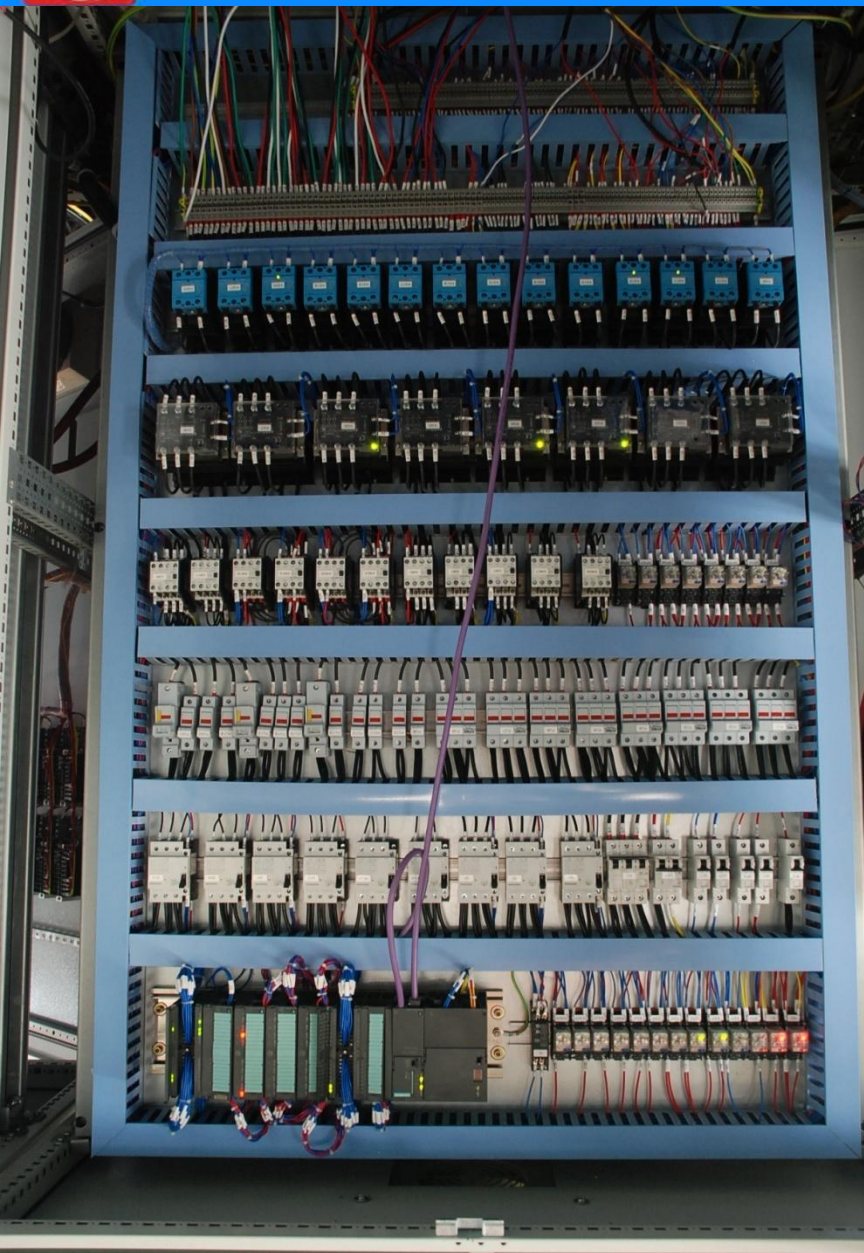


Type: LSS150-35 Max output :500-600 kg/h (new material HDPE)
Motor power: 250kw Speed adjusting method: ABB
vacuum exhausting system : power for vacuum pump motor:3kw



LIANSU

Electrical parts





Inverter of main motor: ABB;
Thermoregulation meter:
OMRON ; contactor: SIEMENS;
breaker: SIEMENS; solid state
relay: CELDUC (France)

Computer control of the whole
line: ——HMC-II system,
**Siemens PLC S7-300 system
adopted, 10"color operation
panel**, advanced control system
internationally

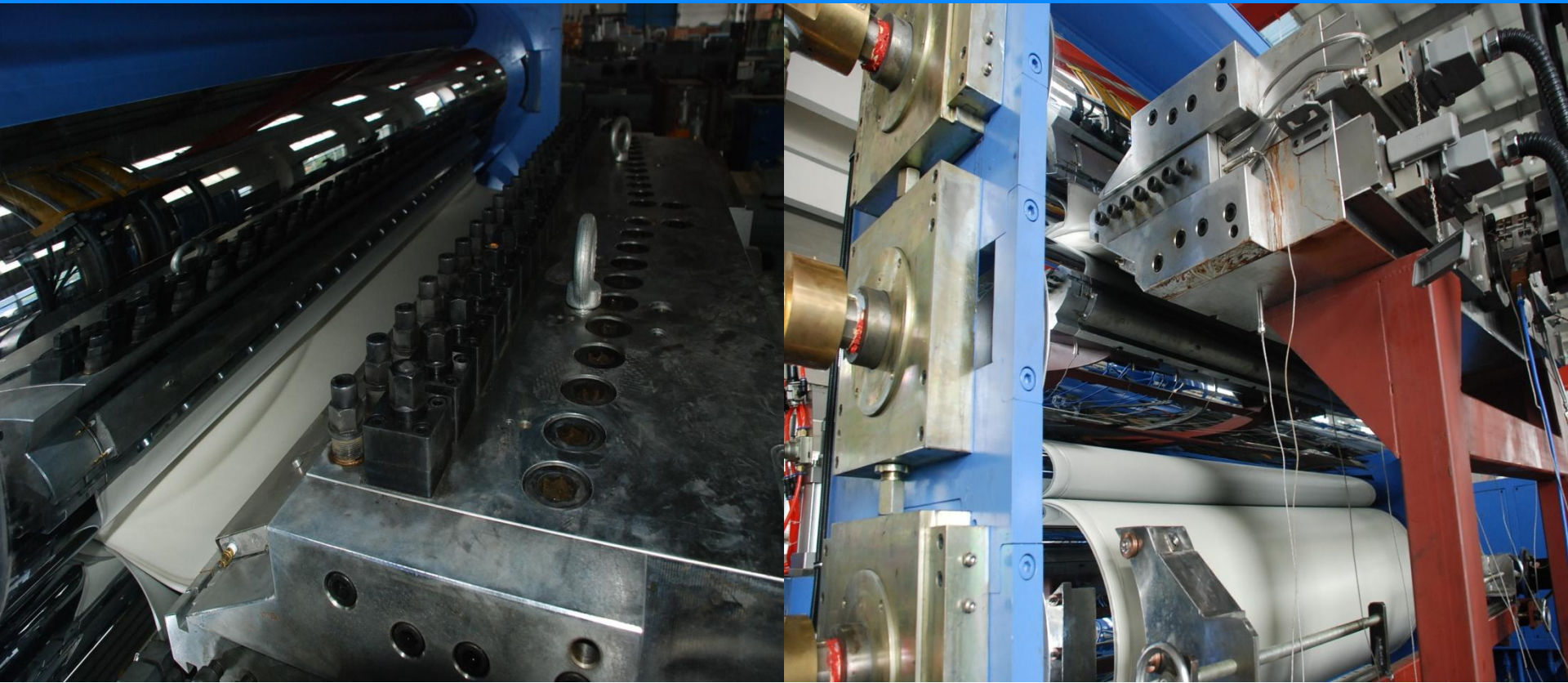
Cables: 3 phase ,4 cables

We only use international famous
brands for all electrical parts to
guarantee the stability working
for the extrusion lines





- with double cylindrical double station hydraulic screen changer(1set)(match with LSS150extruder)
- With hydraulic station which can screen exchanging with no stop of the machine
- filter area: $14300\text{mm}^2 \times 2$
- Heating with heating rod
- Voltage 220V, power $4\text{KW} \times 2$, closed connection
- Hydraulic control system,



Applicable material: PE,PP

Effective width of discharge: 1800mm

Product width: 1500mm

Product thickness: 10-20 mm

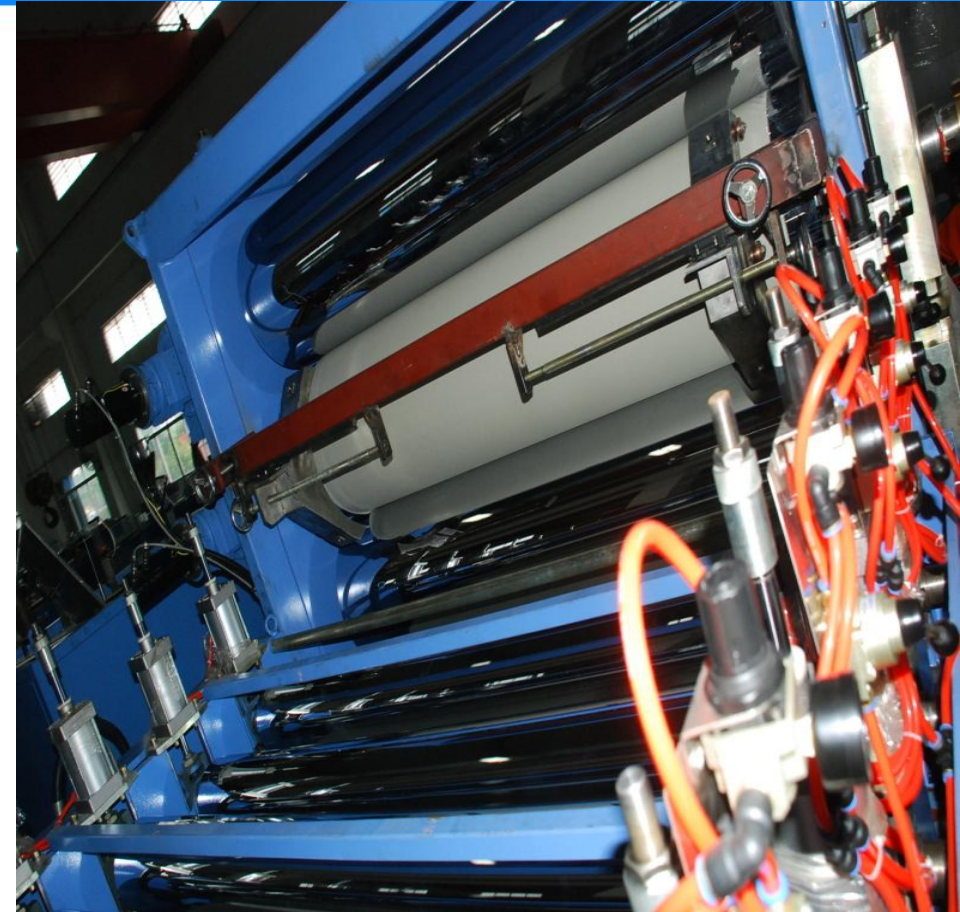
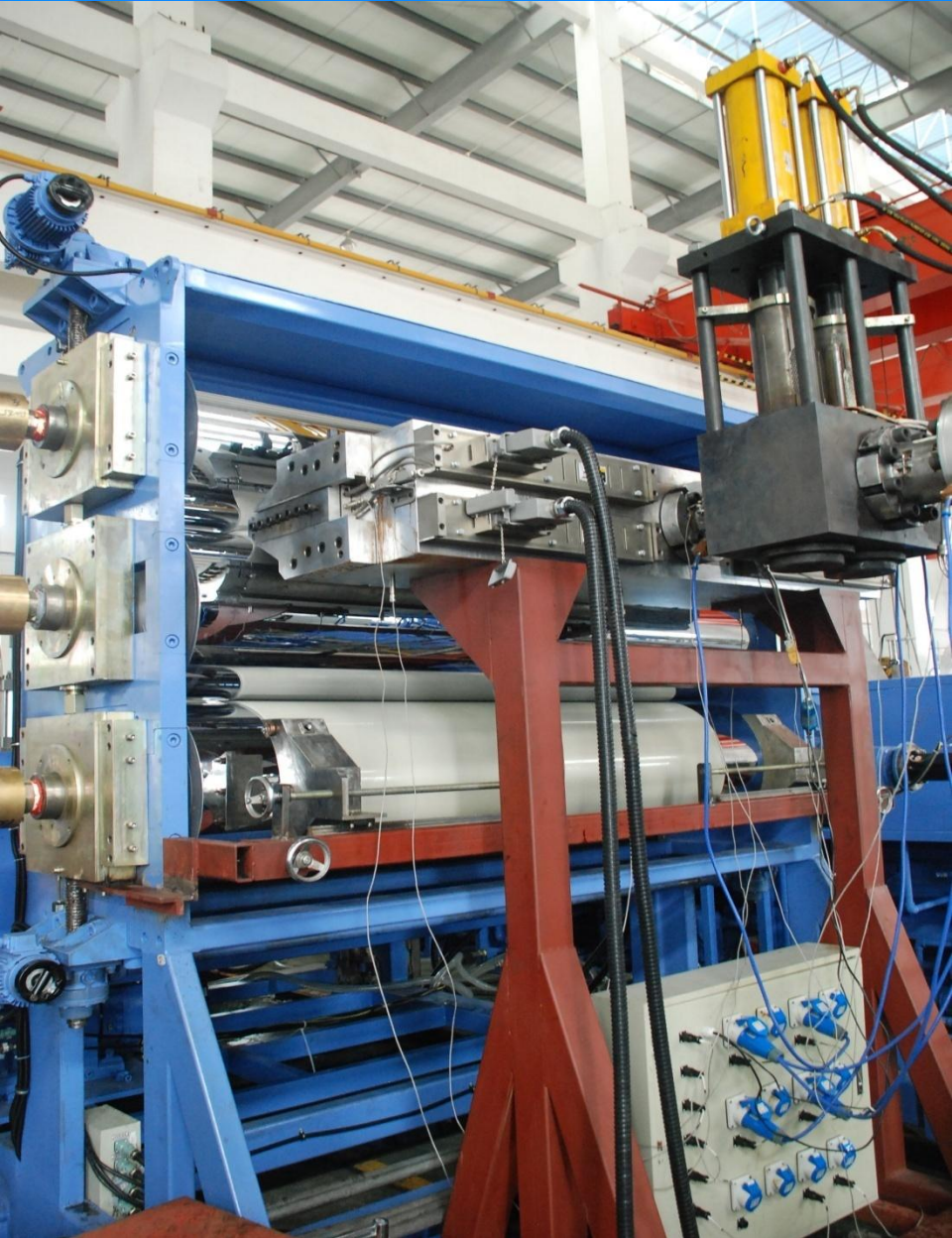
Die lip adjusting range: 15-27 (with 2 pcs of lower die lip 15-20mm、22-27mm)

Die lip adjusting method: upper die lip is pull-push type fine tuning, lower die lip is fixed and replaceable

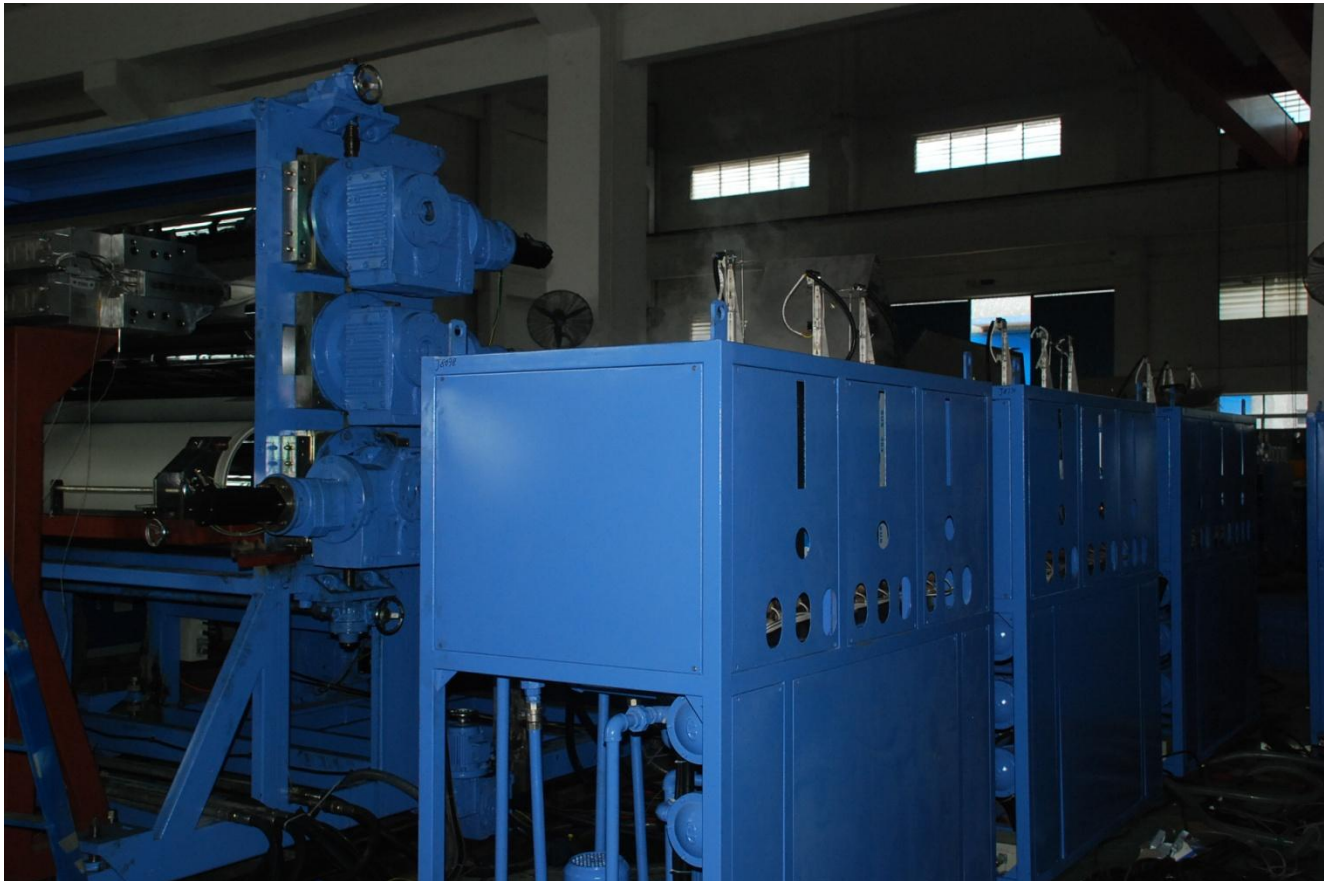


LIANSU

LSBY-1500B PE PP Vertical Tri-roller



Material of roller surface : 45#steel
Roller surface hard chrome plating 0.08~0.12
hardness: HRC48
Roughness of roller surface: 0.01 μ m
External wall thickness: 25~30mm , spiral flow
channel
Upper and lower roller hydraulic elevating
Tri-roller separate motor gearbox



Hot oil exchanger :3sets Tri-roller each with oil circulation temp control system

Heating power : 4kwX3X3

Oil pump power : 1.5kwX3



LIANSU

LSBC-1500B PE PP 24-roller slow cooling calibration device



Composed of 12pairs of cooling calibration steel roller

Steel roller diameter : $\Phi 200 \text{ mm} \times 2000 \text{ mm}$

Materials : 45# steel, chrome plating

Surface chrome plating, thickness after grinding: 0.04-0.06surface
roughness: 0.025



LIANSU

LSBP-1500B PE PP Cooling conveying platform



Conveying roller: $\text{Ø}63 \sim \text{Ø}74\text{mm}$, chrome plated steel roller or stainless steel roller 18 pcs Length :12 M



Silica roller diameter: $\Phi 190\text{mm}$, 2pcs pneumatic brake device, conical surface expanding shaft Bending rubber roller flattening $\Phi 100\text{mm}$, 2pcs



H auling roller size	Φ220mm, 8pcs
Gap adjusting method	Cylinder compression
Speed regulating method	Servo controller
Servo motor power	2.9kw
Hauling speed	0.1~2m/min
Vertical edge-cutting device	
Saw plate trimming: Cutting width adjustable	
Saw motor power:	4kw×2set (2800RPM , frequency conversion)
With edge-cutting saw	12"×2set
Dust-suction device	3kW



LIANSU LSBG-1500B PE PP Horizontal cutting unit



Alloy saw	5.5kw (frequency conversion)
Saw size	12"
Dust-suction device	3kW
Cutting synchronous motor power	1.1kw
Cutting platform for roller conveying	Ø63~74mm
Photo-electric meter counting device	1set
Cylinder clamping, following and reset function	Min panel length:2m



Length:3 M Motor :0.75kw

Hydraulic lifting table Up and down height range: 500-1200mm

Hydraulic station motor : 0.37kw



For other information of the machine, please refer to the machine specification.

Look forward to a Win-win business

